

BACK VIEW OF SUN VISOR ASSEMBLY

READ ALL INSTRUCTIONS BEFORE BEGINNING INSTALLATION

INSTALLATION INSTRUCTIONS

- 1- REMOVE THE EXISTING SUN VISOR.
- 2- REDRILL EXISTING HOLES TO 1/2 in. AND INSERT WELLNUTS.
- 3- INSTALL THE BRACKETS ONTO THE CAB.
- 4- TEMPORARILY INSTALL THE SUN VISOR AS ILLUSTRATED
- 5- USING THE SUN VISOR, MARK BRACKET MISSING HOLES AND BOTH ENDS HOLES OF SUN VISOR.

ATTENTION

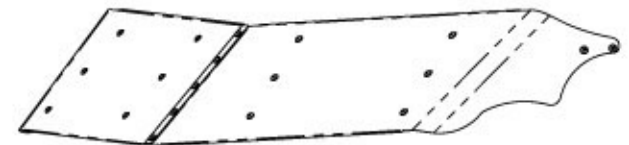
REMOVE SUN VISOR TO PREVENT DAMAGE

- 6- DRILL THE MARKED HOLES AT 1/2 IN. DIA.
- 7- INSERT THE WELLNUTS.
- 8- IF WITHOUT LIGHTS; SKIP TO STEP #12.
- 9- INSTALL THE LIGHTS ON SUN VISOR.
- 10- CONNECT THE LIGHTS AND DIRECT WIRE TOWARDS CENTER.
- 11- FASTEN THE SUN VISOR USING THE FASTENING HARDWARE.
- 12- REINSTALL THE SUN VISOR ON THE CAB.

CAUTION

IT IS THE RESPONSIBILITY OF THE INSTALLER TO PLAN AHEAD THE ADEQUATE ELECTRICAL CONNECTION ACCORDING TO THE STANDARDS OF THE TRUCK MANUFACTURER AND DOT REGISTRATION.

- 13- CONNECT LIGHTS HARNESS TO THE TRUCK.
- 14- TIGHTEN ALL BOLTS AND SCREWS FIRMLY.

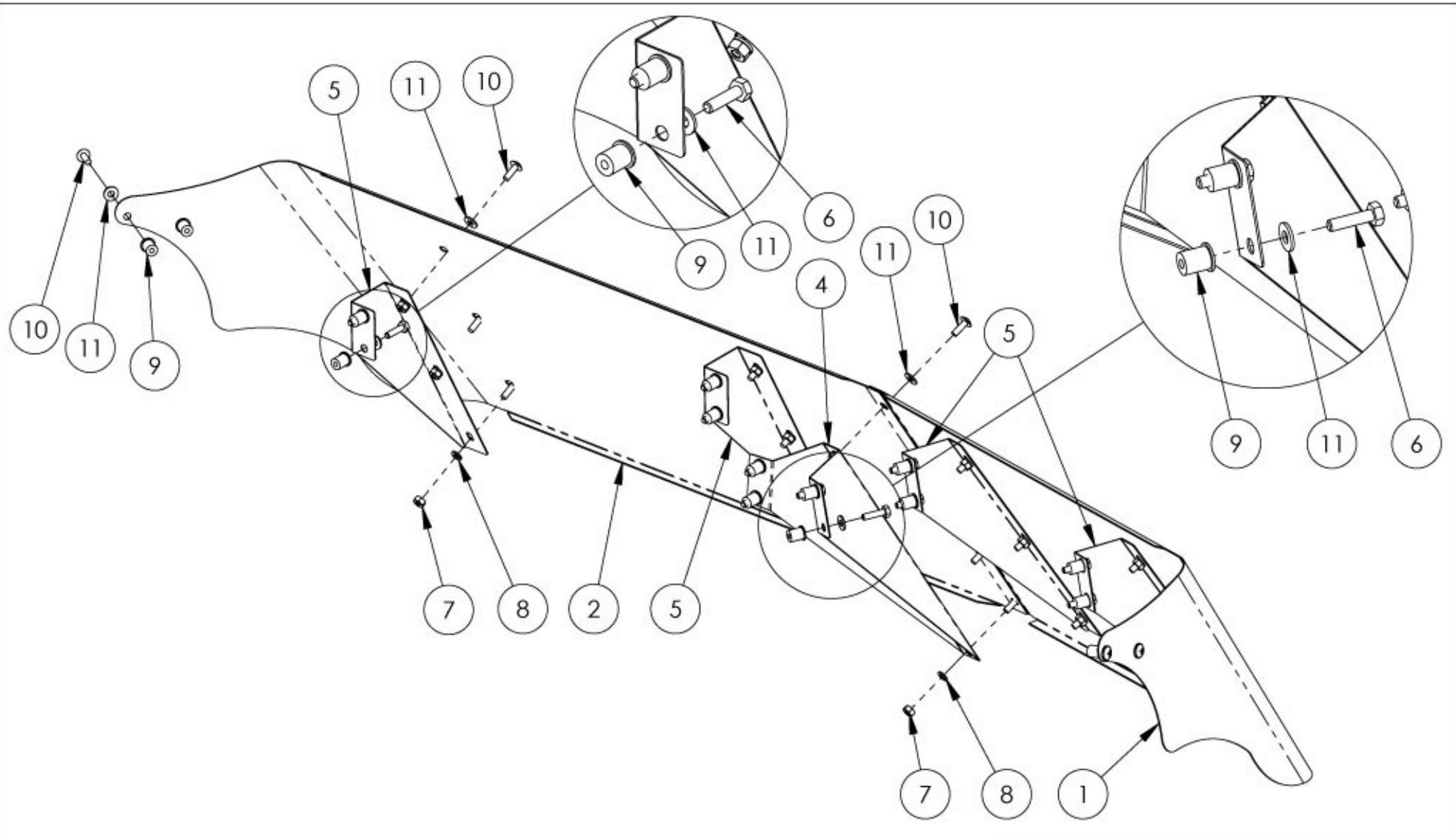


TRUX ACCESSORIES

TITLE:
SUN VISOR
PETERBILT 379 ULTRACAB UP TO 2004

SIZE DWG. NO.
A TSUN-P8, P9 & P10

NAME	DATE	REV	DATE
DRAWN BY -	-	PH1	-
SCALE: 1:24	WEIGHT: LBS	SHEET: 1 OF 1	



ITEM NO.	PART NO.	PART NO.	PART NO.	DESCRIPTION	QTY
1	M7131001SD	M7131003SD	M7131004SD	RH SUN VISOR PANEL	1
2	M7131001SG	M7131003SG	M7131004SG	LH SUN VISOR PANEL	1
3	K7131001BH	-	-	HARDWARE KIT INCLUDES	1
4	-	-	-	PR9131001-C00	1
5	-	-	-	PR9131001-U00	4
6	-	-	-	HEX. BOLT 1/4NC X 1	12
7	-	-	-	HEX NUT 1/4-20NC	17
8	-	-	-	LOCK WASHER 1/4" SS	17
9	-	-	-	WELL NUT 1/4"-20NC	16
10	-	-	-	TRUSS PHILIPS 1/4"-20NCX3/4"SS	21
11	-	-	-	FLAT WASHER 1/4"	33

TRUX ACCESSORIES

TITLE:
SUN VISOR
PETERBILT 379 ULTRACAB UP TO 2004

SIZE DWG. NO. **A**

TSUN-P8, P9 & P10

NAME	DATE	REV	DATE
DRAWN BY	-	PH1	-

SCALE: 1:6 WEIGHT: LBS SHEET: 1 OF 1